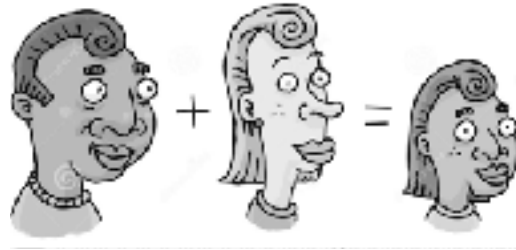


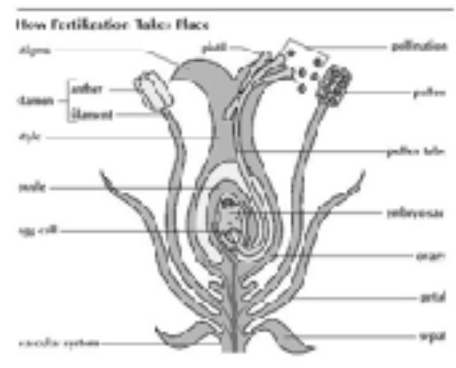
Heredity is the passing of physical characteristics from parents to offspring.



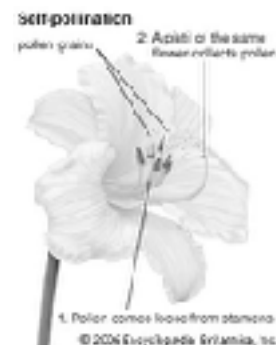
Genetics is the study of heredity



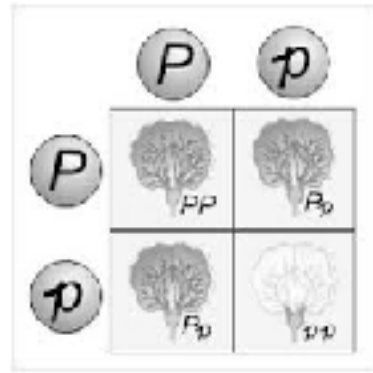
A new organism begins to form when egg and sperm join in the process called fertilization.



Pollen must reach the pistil of a pea flower in a process called pollination.



Purebred always produced the same offspring with the same traits.



A dominant allele is one whose trait always shows up in the organism when the allele is present.

**T**

A recessive allele is hidden whenever the dominant allele is present.

**t**

A gene are the factors that control traits.

